

## **APPENDICE E – Idraulica 2D: moto stazionario**

### MODELLAZIONE IDRAULICA BIDIMENSIONALE

#### MOTO STAZIONARIO

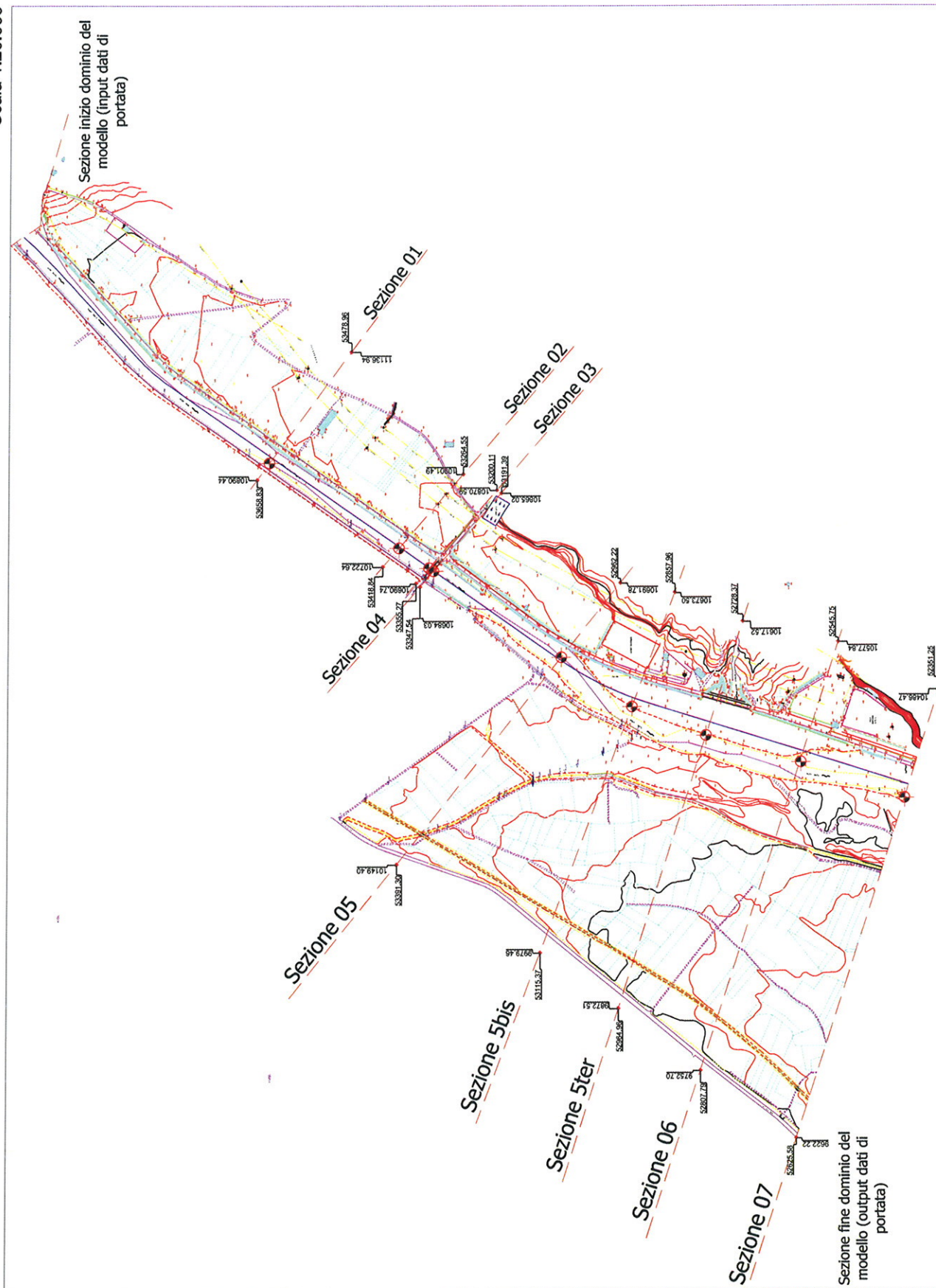
#### TABELLE RIEPILOGATIVE

#### GRAFICI E RISULTATI OTTENUTI

# SEZIONI DI CALCOLO

Scala 1:20.000

54133.948

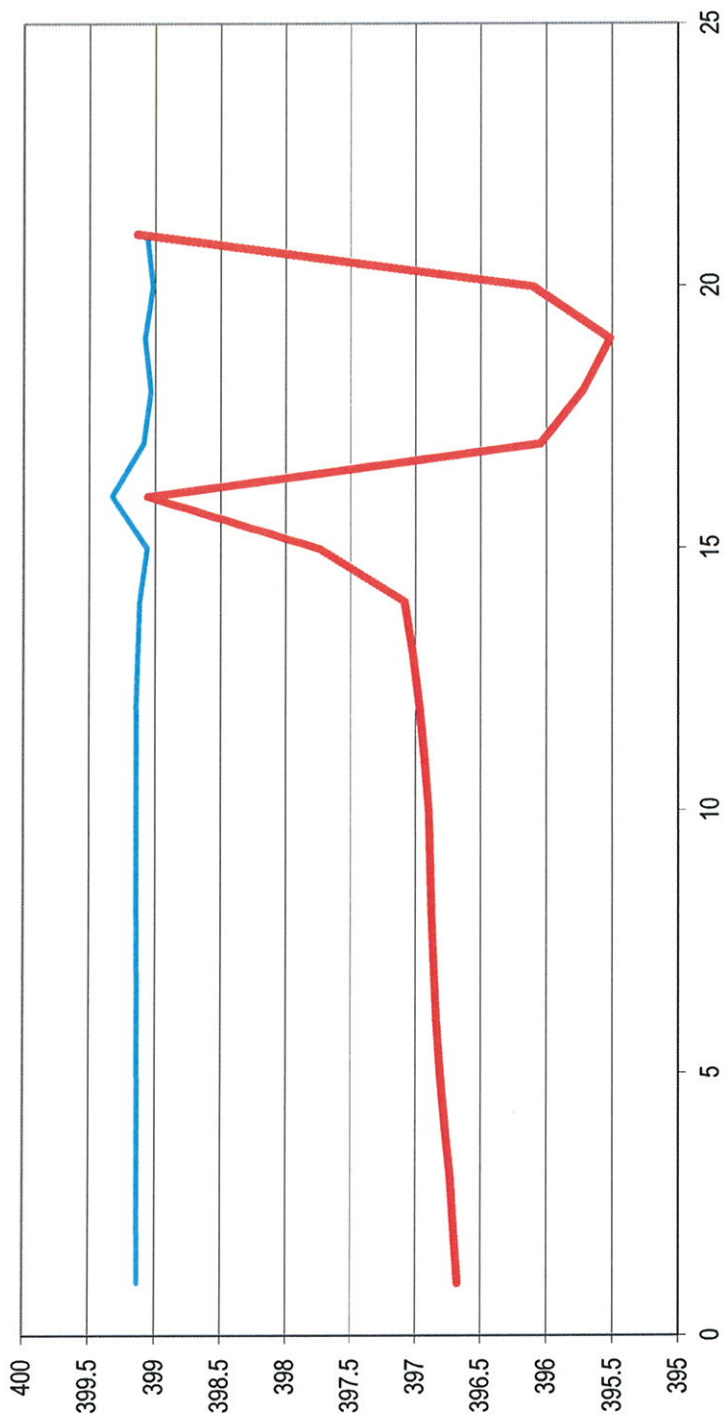


9325.695

52348.524

11803.784

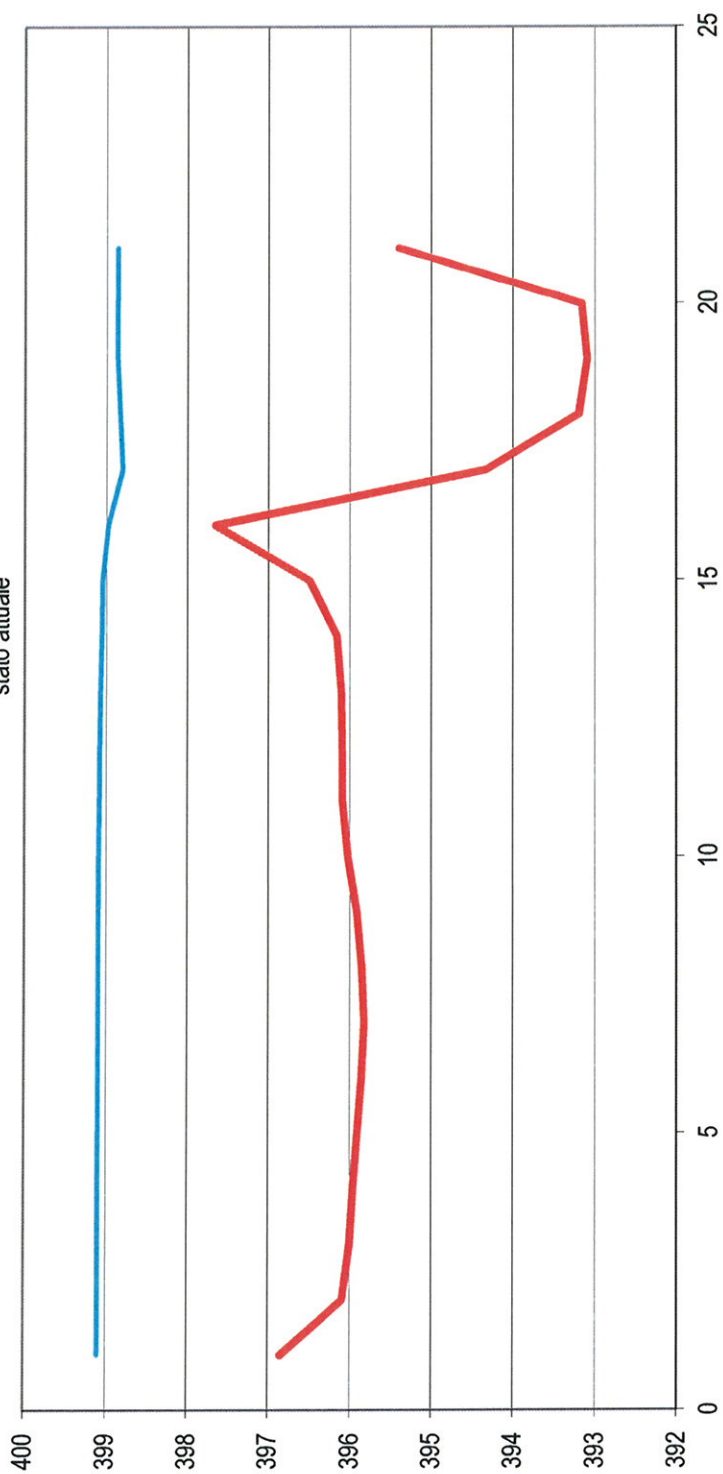
SEZIONE 01  
stato attuale



h idrometrica

terreno

SEZIONE 02  
stato attuale

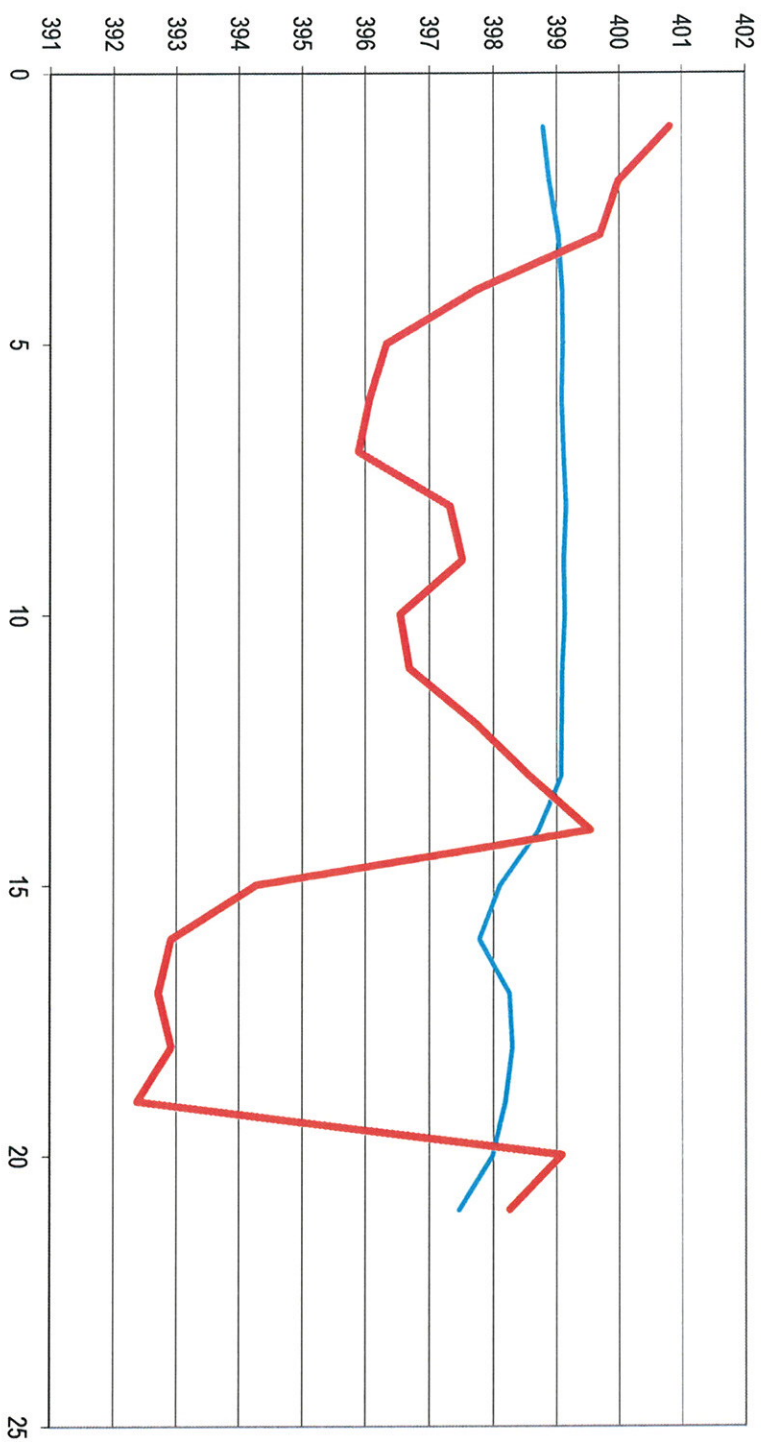


h idrometrica

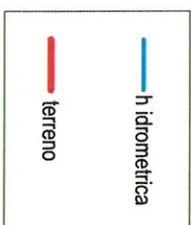
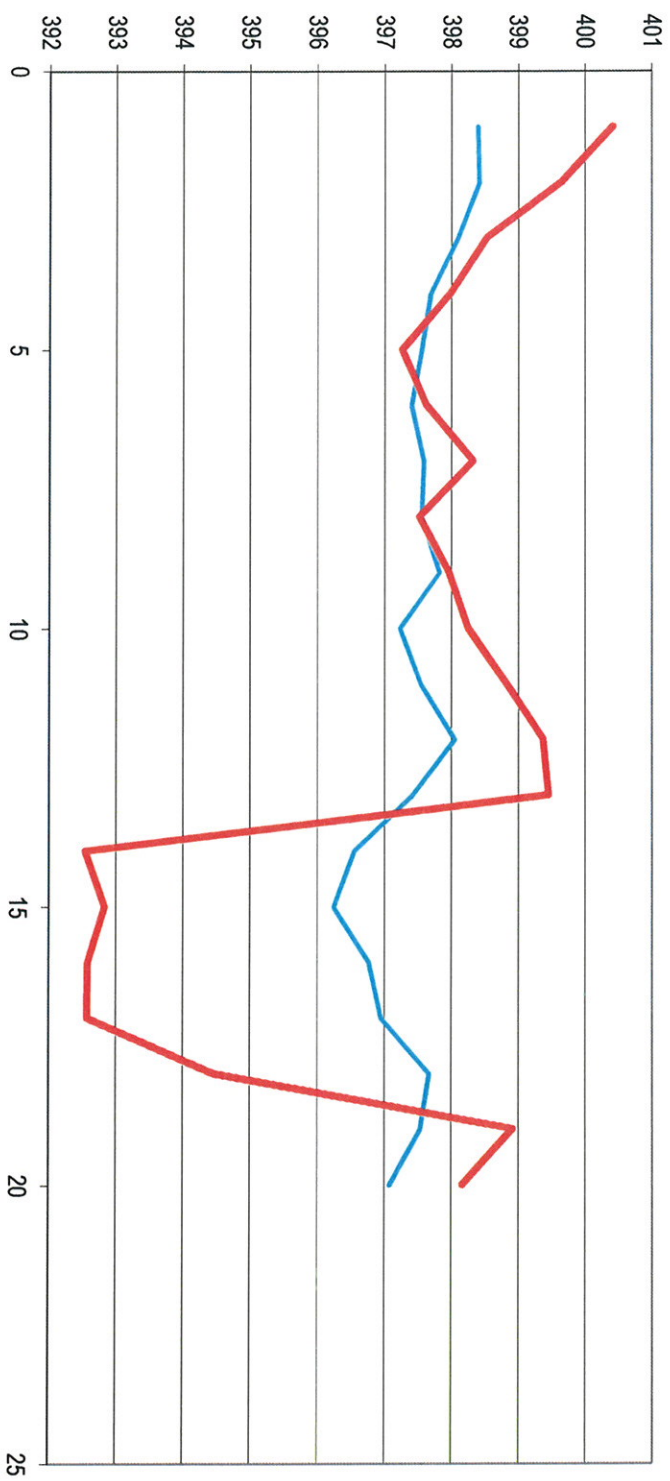
terreno



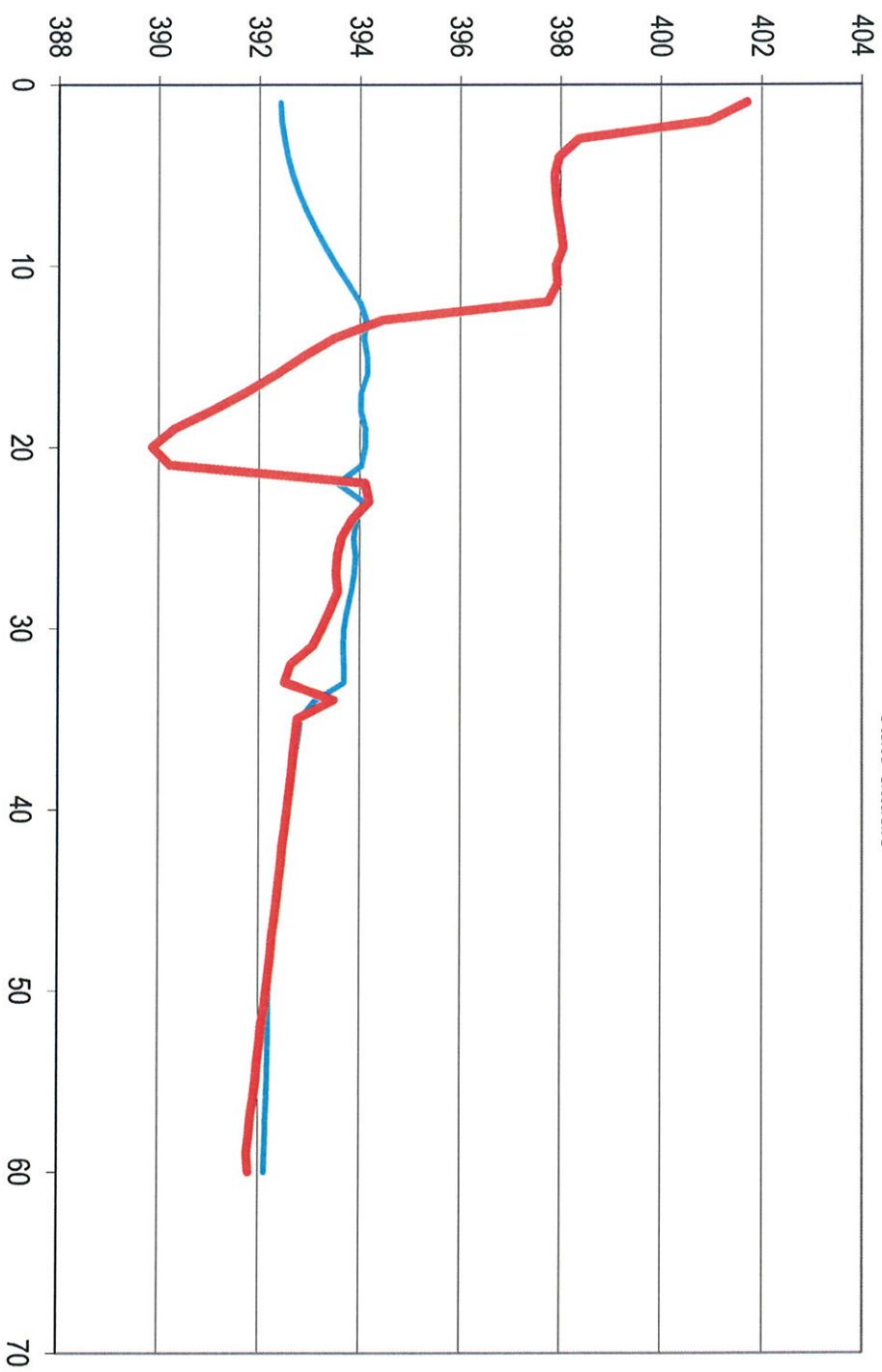
SEZIONE 03  
stato attuale



SEZIONE 04  
stato attuale



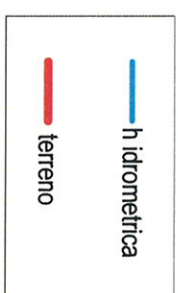
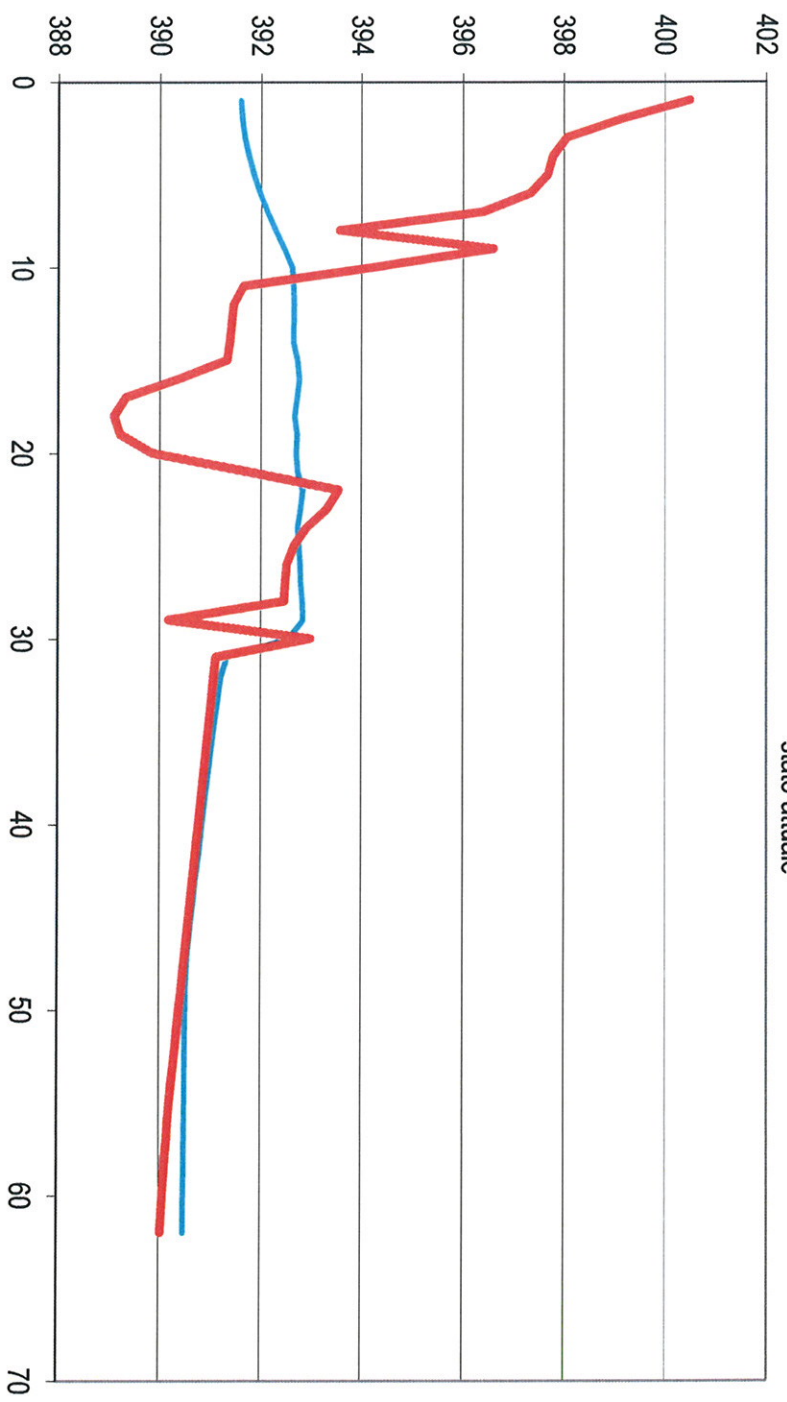
SEZIONE 05 bis  
stato attuale



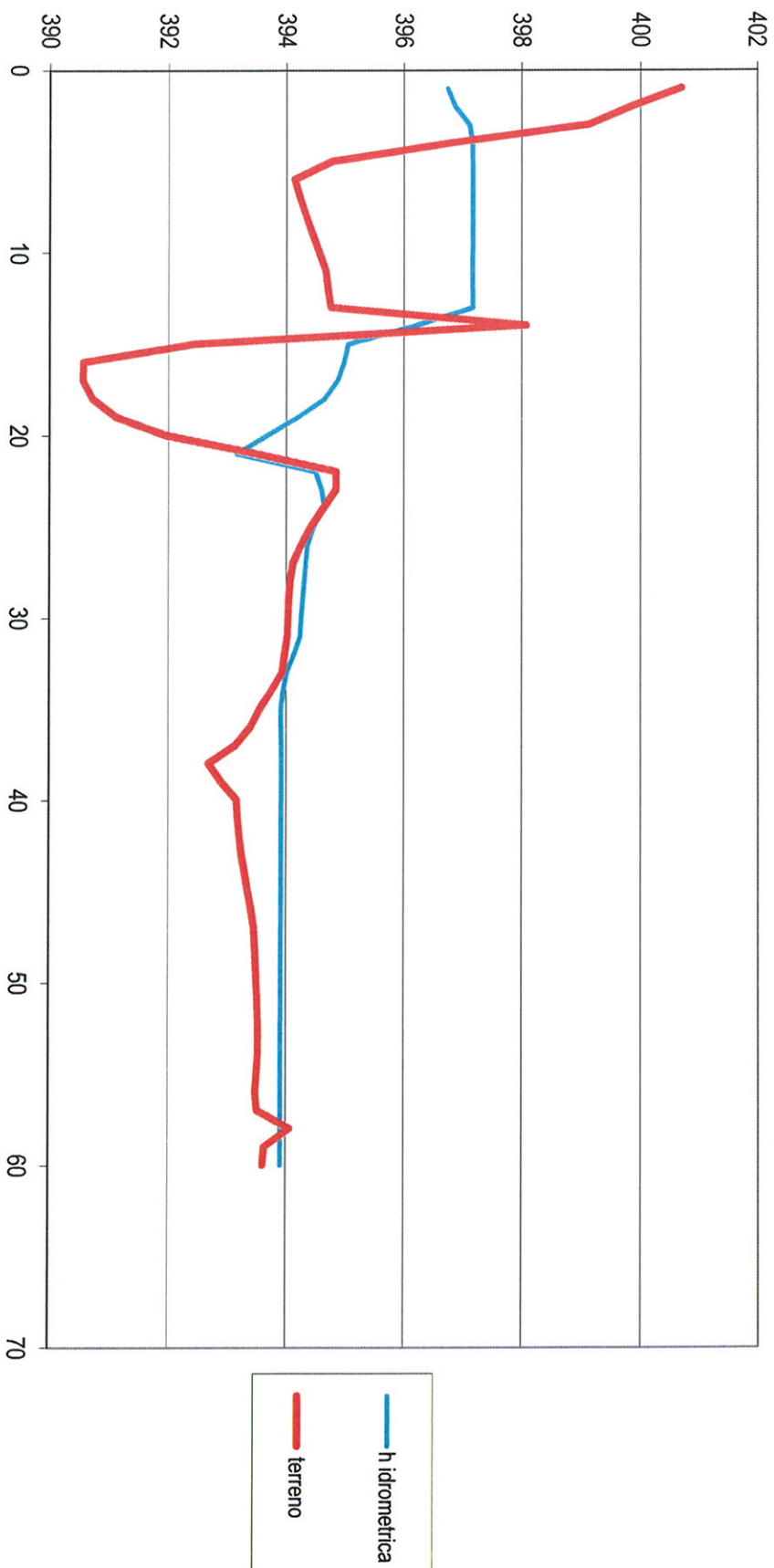
h idrometrica

terreno

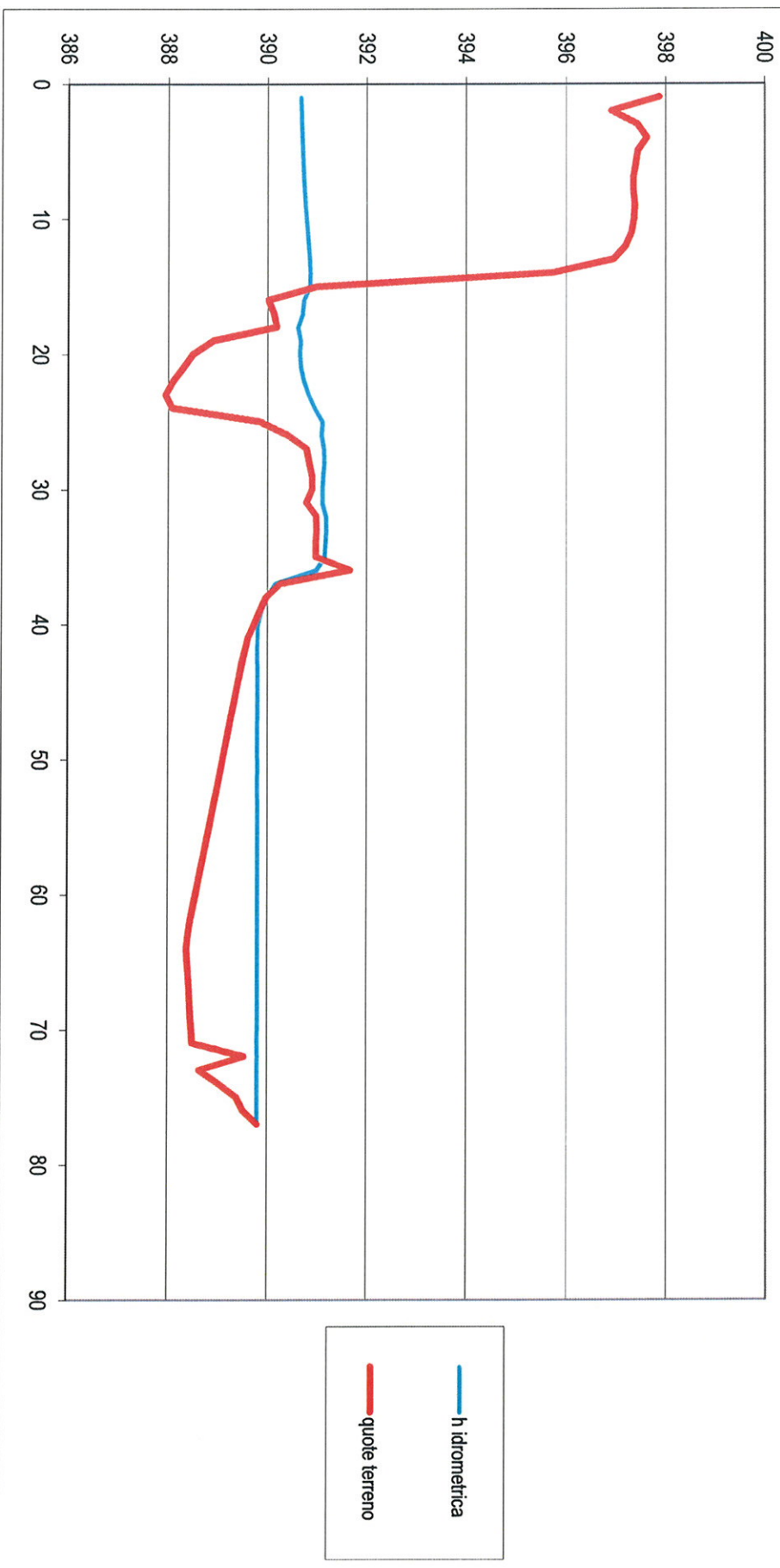
SEZIONE 05 ter  
stato attuale



SEZIONE 05  
stato attuale

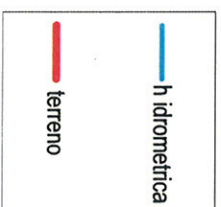
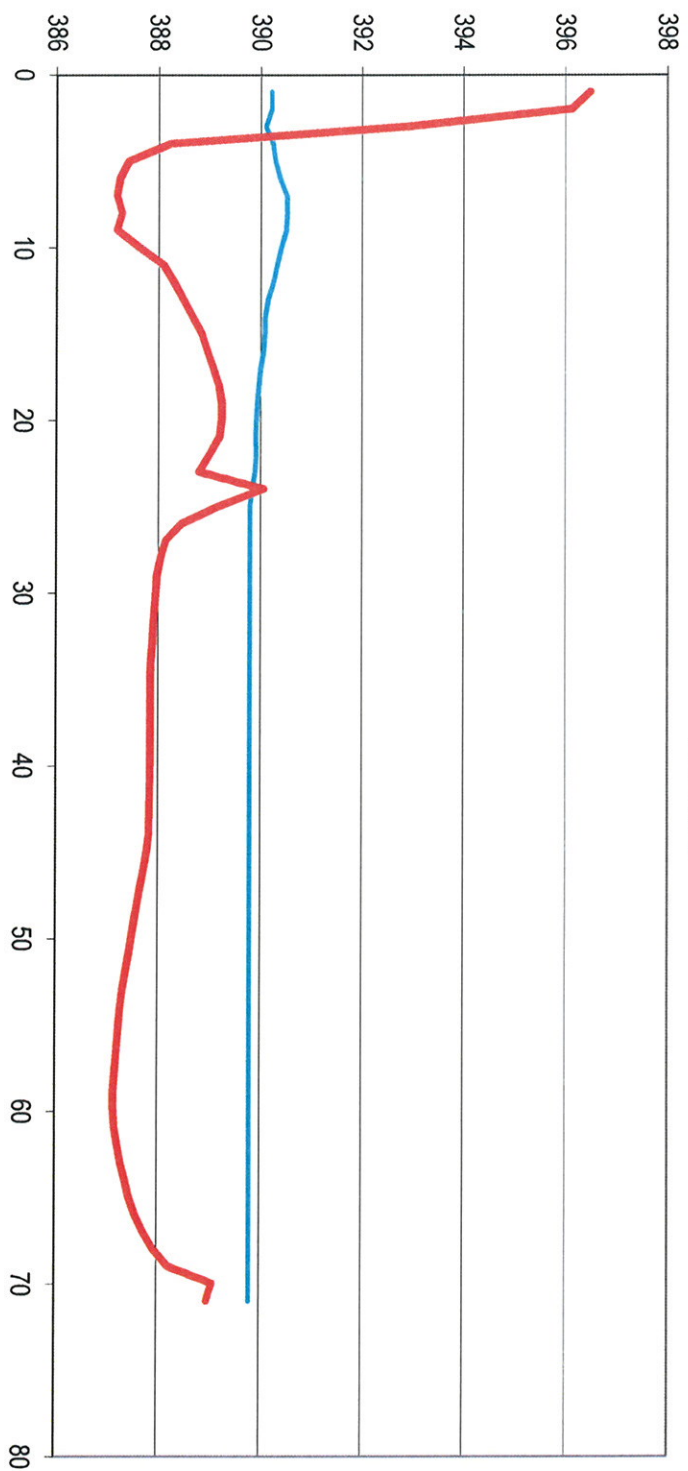


SEZIONE 06  
stato attuale





SEZIONE 07  
stato attuale

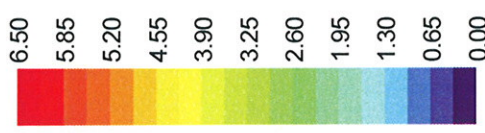


Stato ATTUALE

Qin = 920.000    Qout = 909.211

54133.948

Depth

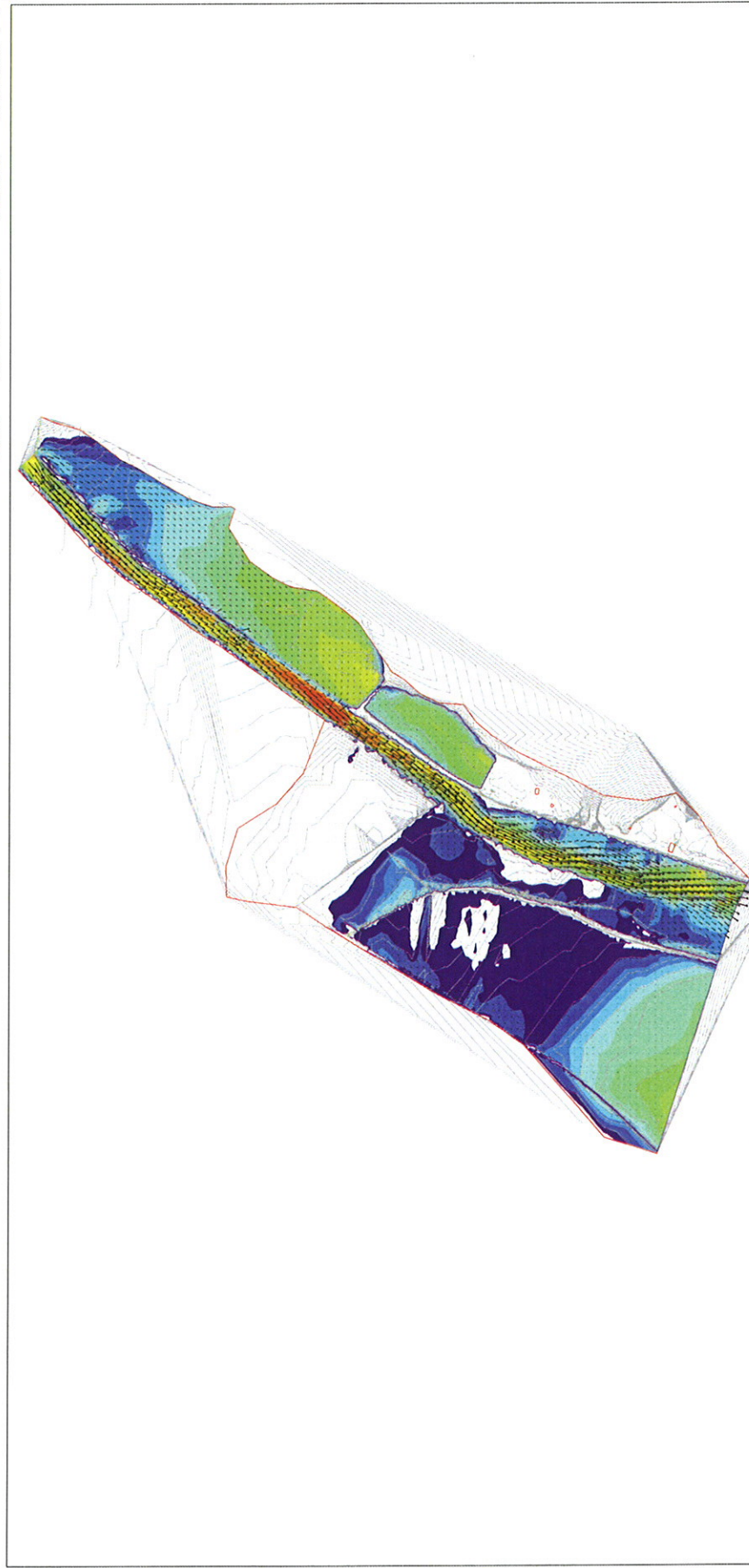


Velocity

10.0 m/s

Distance

100.0 m



8688.656

X

52348.524

12440.823

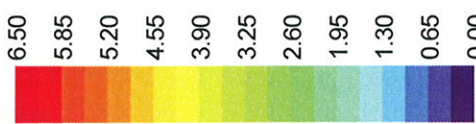
Y

# Stato ATTUALE - Particolare

Qin = 920.000 Qout = 909.211

53525.912

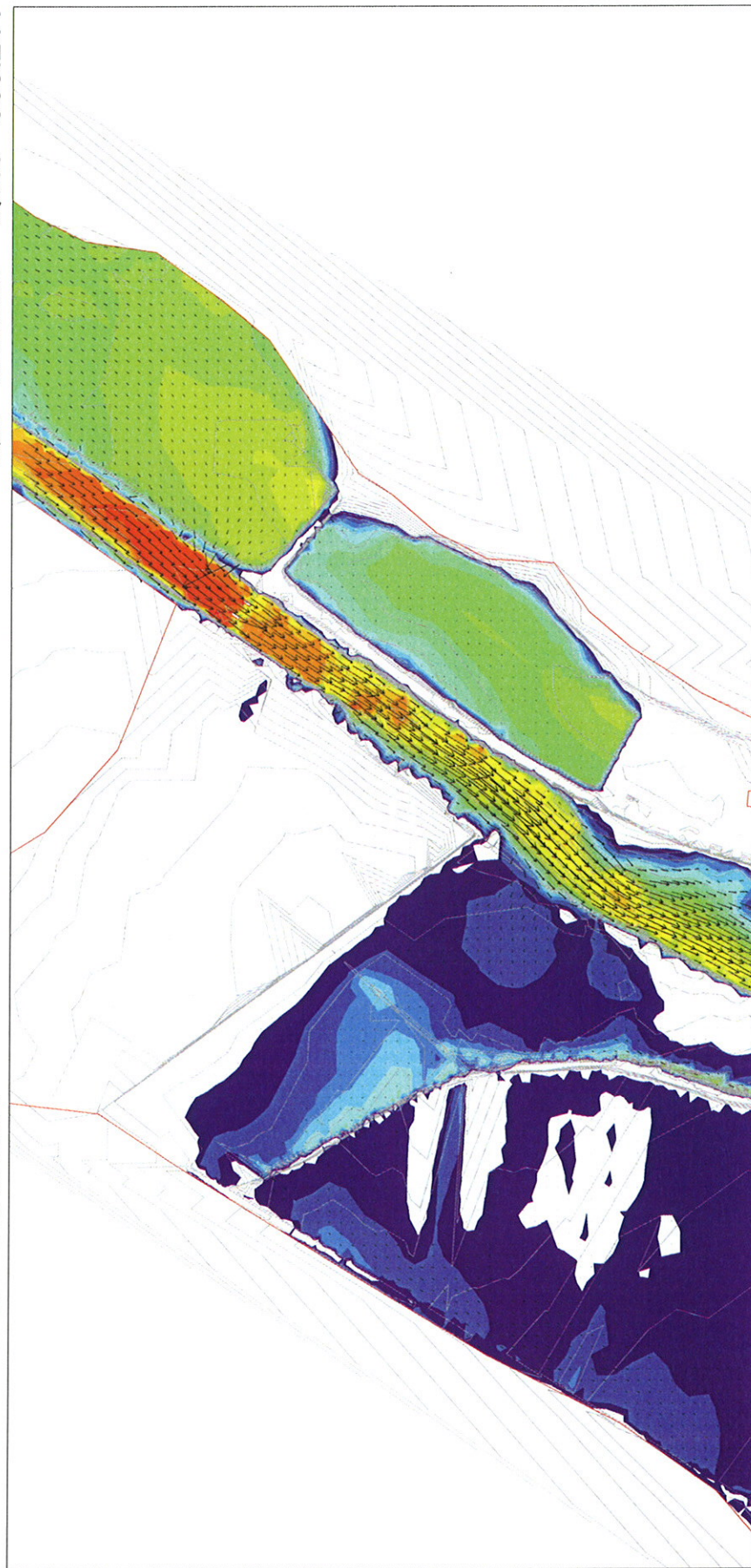
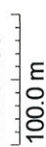
Depth



Velocity

10.0 m/s

Distance



52870.172

11248.436

X

9870.364

Y

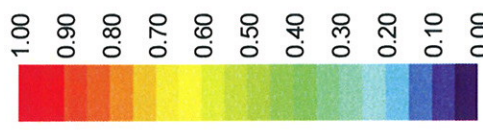


Stato ATTUALE

$Q_{in} = 920.000$     $Q_{out} = 909.211$

54133.948

Velocity

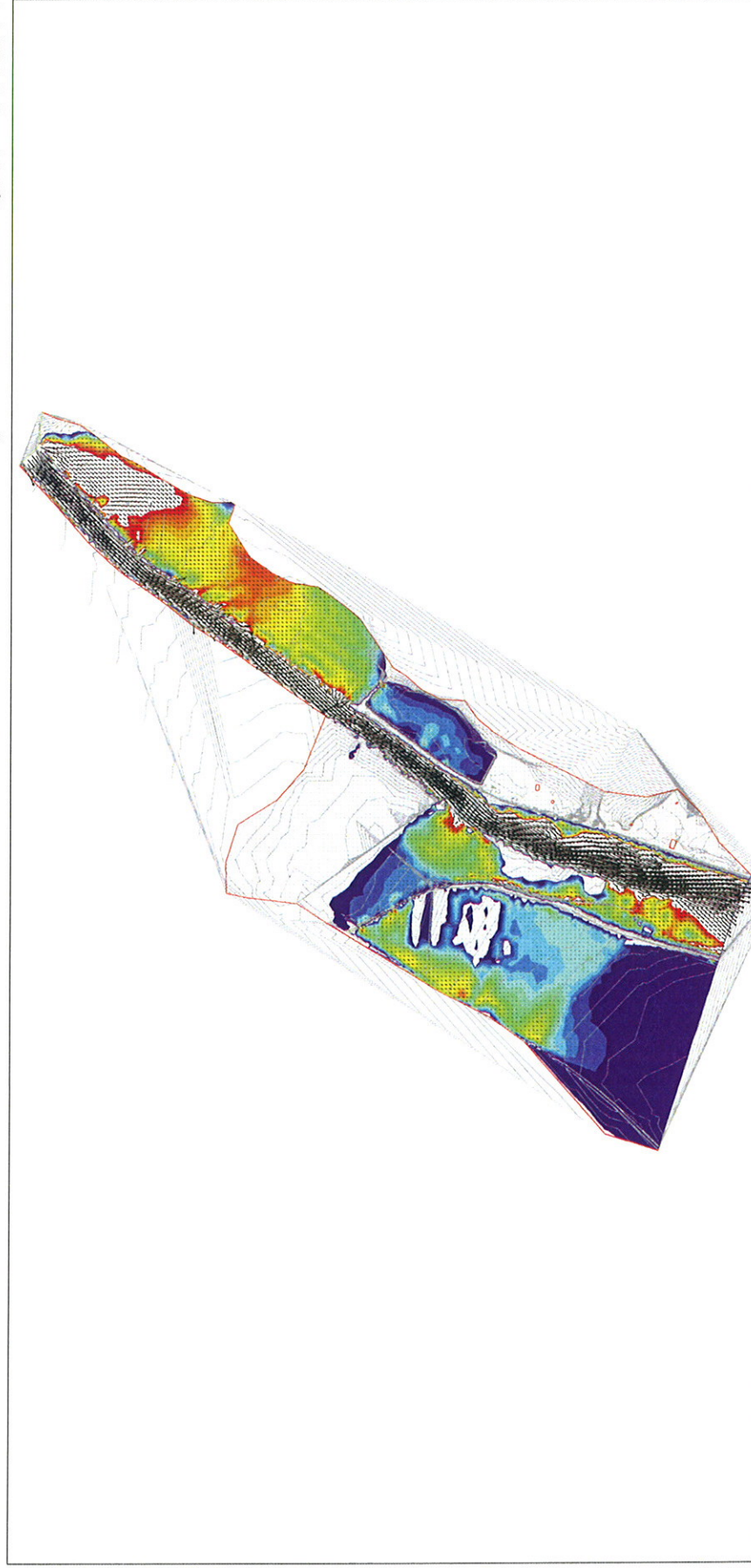


Velocity

10.0 m/s

Distance

100.0 m



8688.656

X

52348.524

12440.823

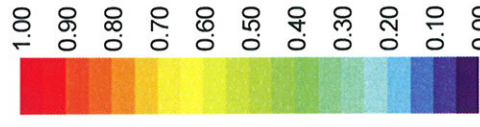
Y

Stato ATTUALE

$Q_{in} = 920.000$     $Q_{out} = 909.211$

53416.028

Velocity

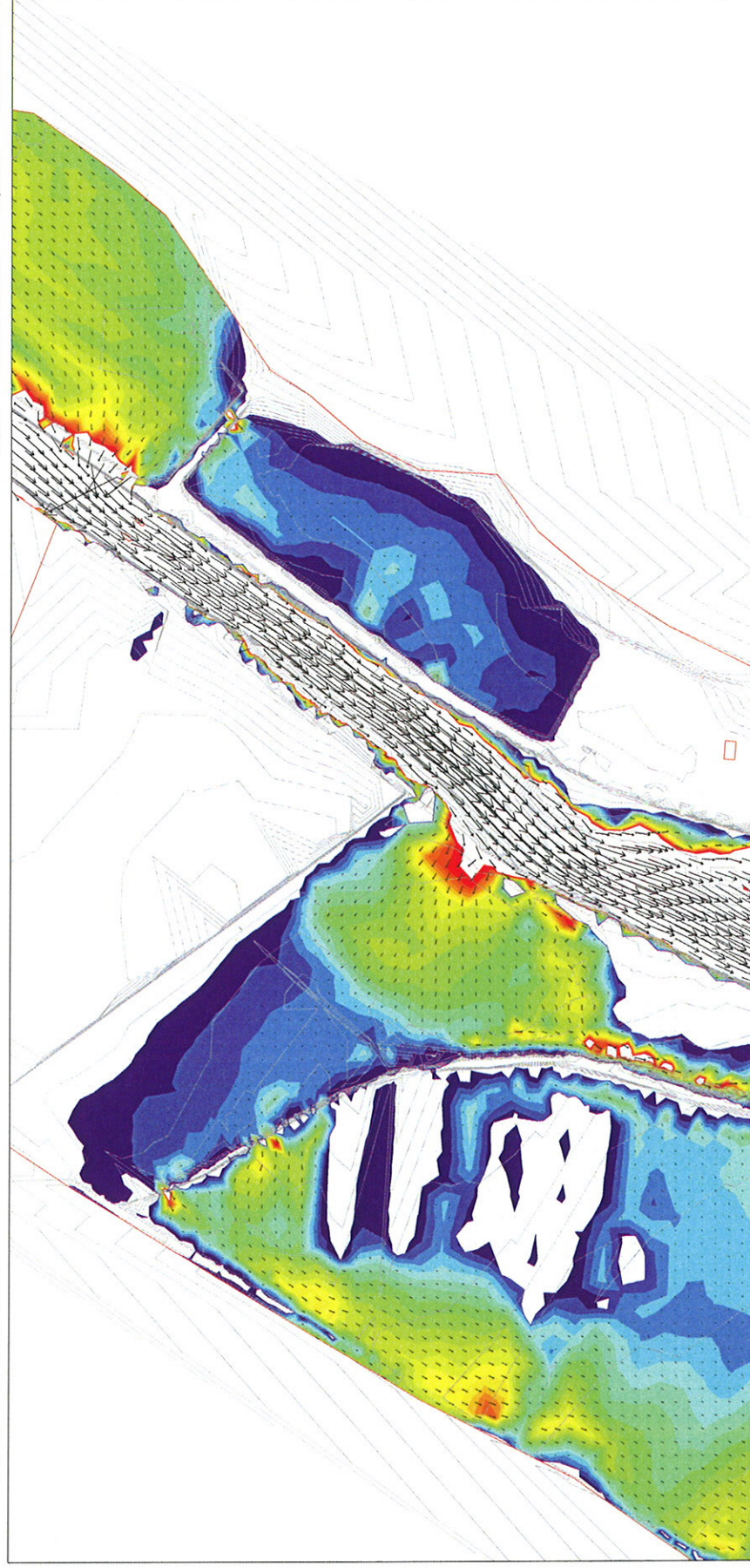


Velocity

10.0 m/s

Distance

100.0 m



9936.805

X

52853.559

11118.865

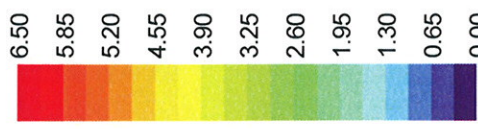
Y



Stato di PROGETTO

$Q_{in} = 920.000$      $Q_{out} = 915.856$

Depth

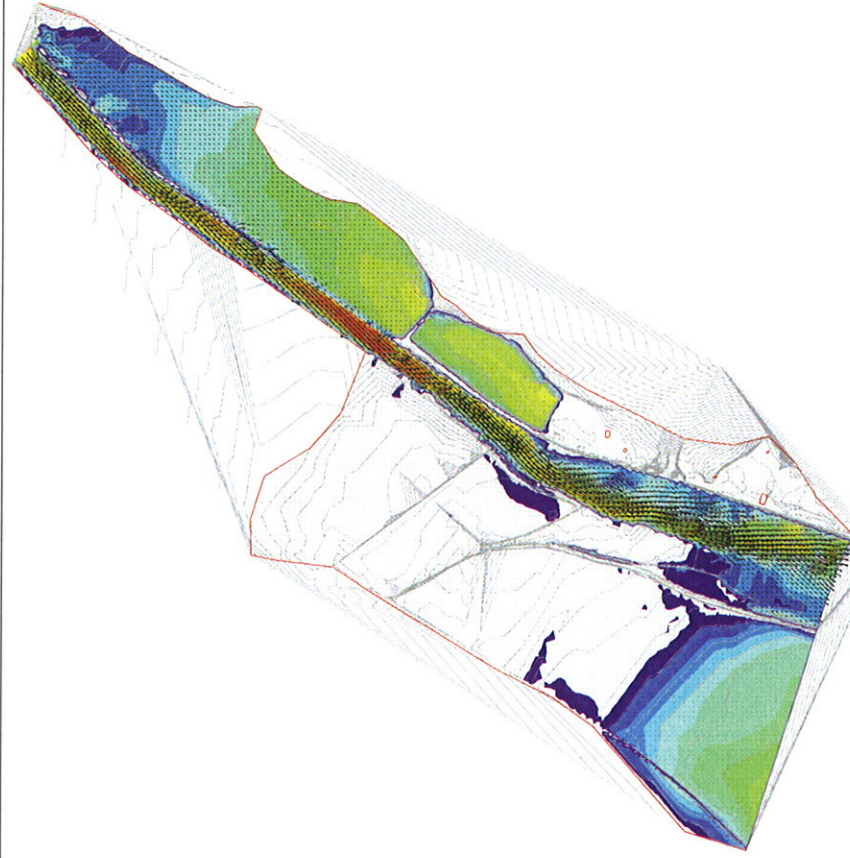


Velocity

10.0 m/s

Distance

100.0 m



Y

X

54133.948

52348.524

12440.823

8688.656

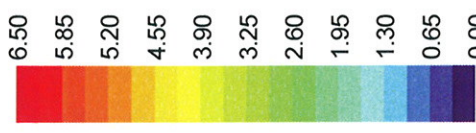


Stato di PROGETTO - Particolare

$Q_{in} = 920.000$     $Q_{out} = 915.856$

53442.609

Depth

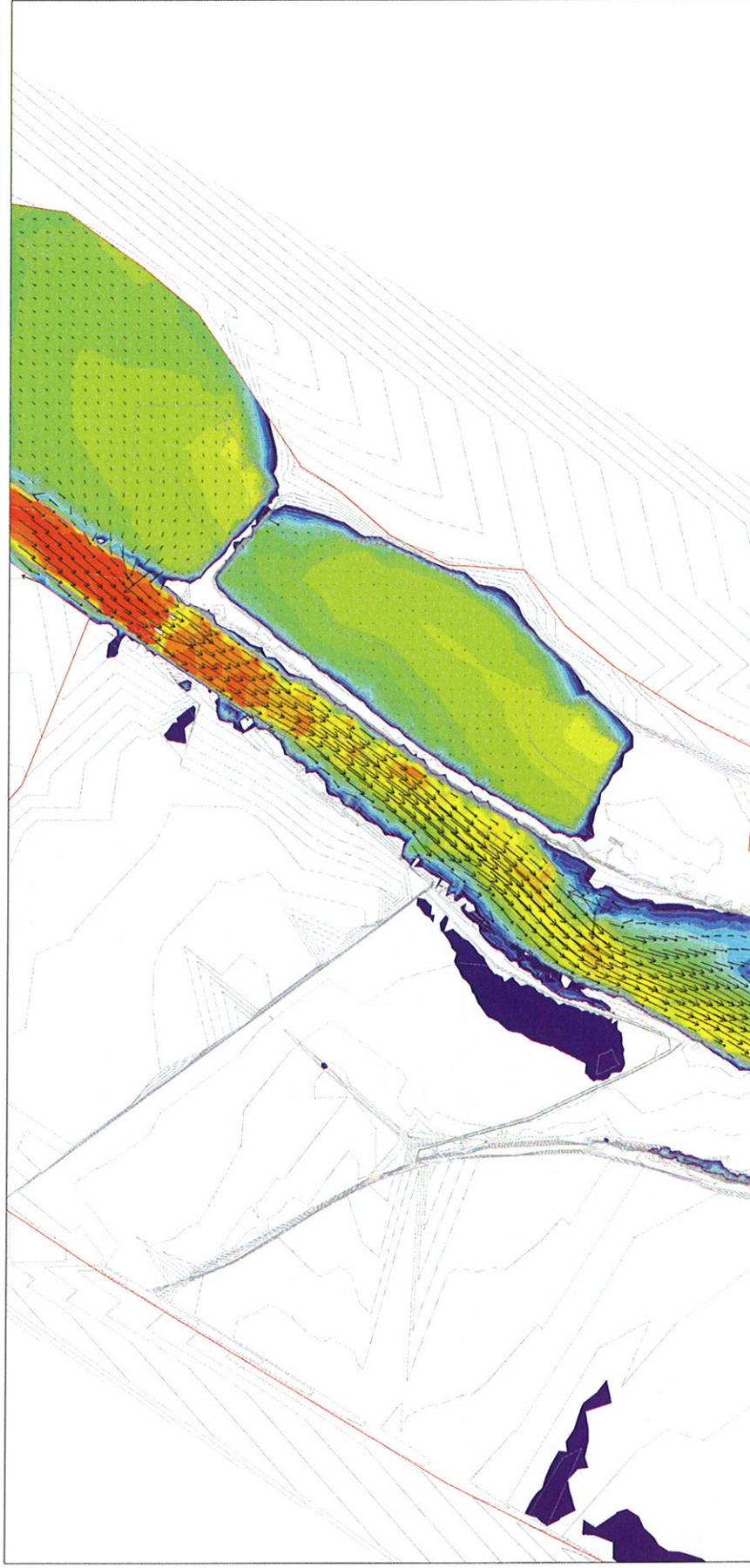


Velocity

10.0 m/s

Distance

100.0 m



9997.936

X

52873.495

11193.961

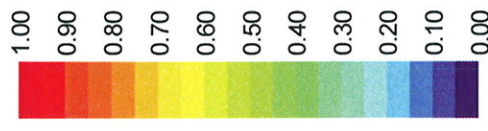
Y

Stato di PROGETTO

$Q_{in} = 920.000$     $Q_{out} = 915.856$

54133.948

Velocity

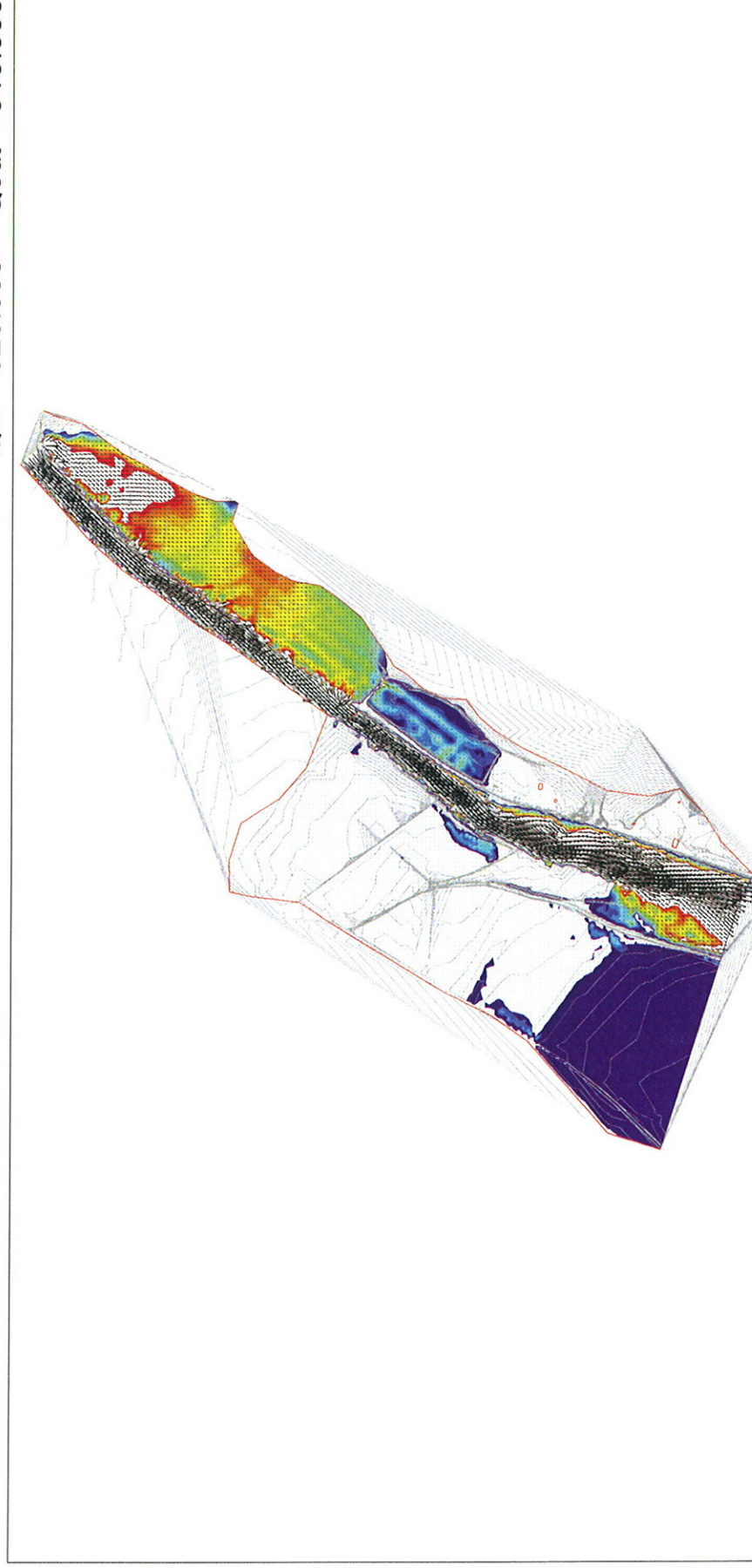


Velocity

10.0 m/s

Distance

100.0 m



Y

X

52348.524

12440.823

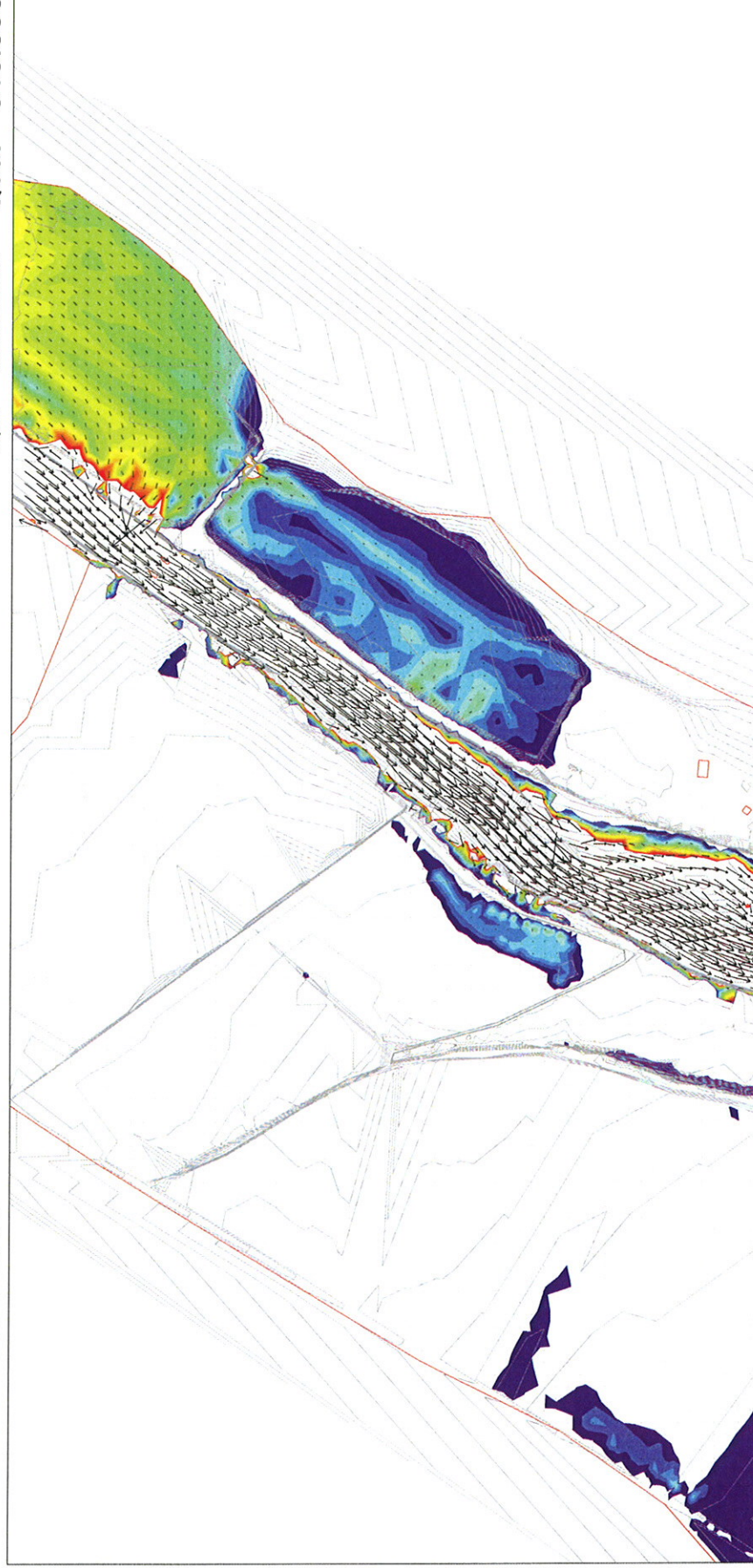
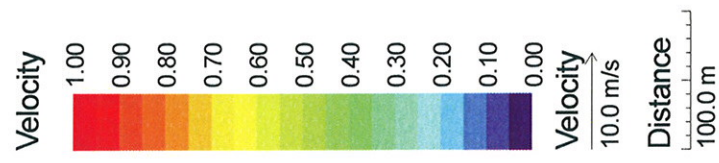
8688.656



Stato di PROGETTO

$Q_{in} = 920.000$     $Q_{out} = 915.856$

53445.932



Y

X

52826.741

11191.757

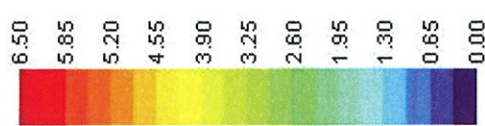
9890.494

Stato ATTUALE

Q<sub>in</sub> = 920.000 Q<sub>out</sub> = 909.211

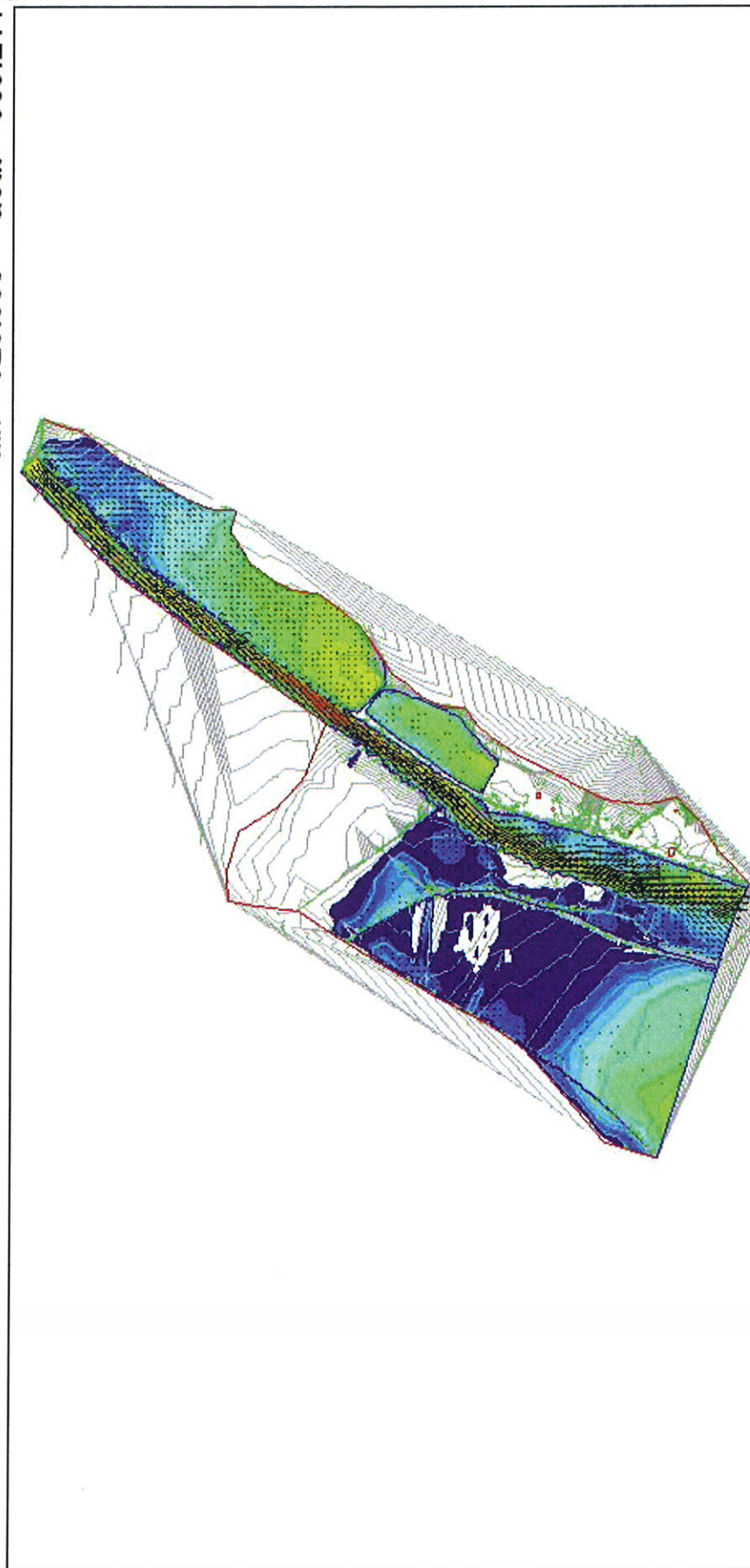
54133.948

Depth



Velocity  
10.0 m/s

Distance  
100.0 m



8688.656

X

52348.524

12440.823

Y



# Stato ATTUALE - Particolare

Qin = 920.000 Qout = 909.211

53525.912

Depth

6.50

5.85

5.20

4.55

3.90

3.25

2.60

1.95

1.30

0.65

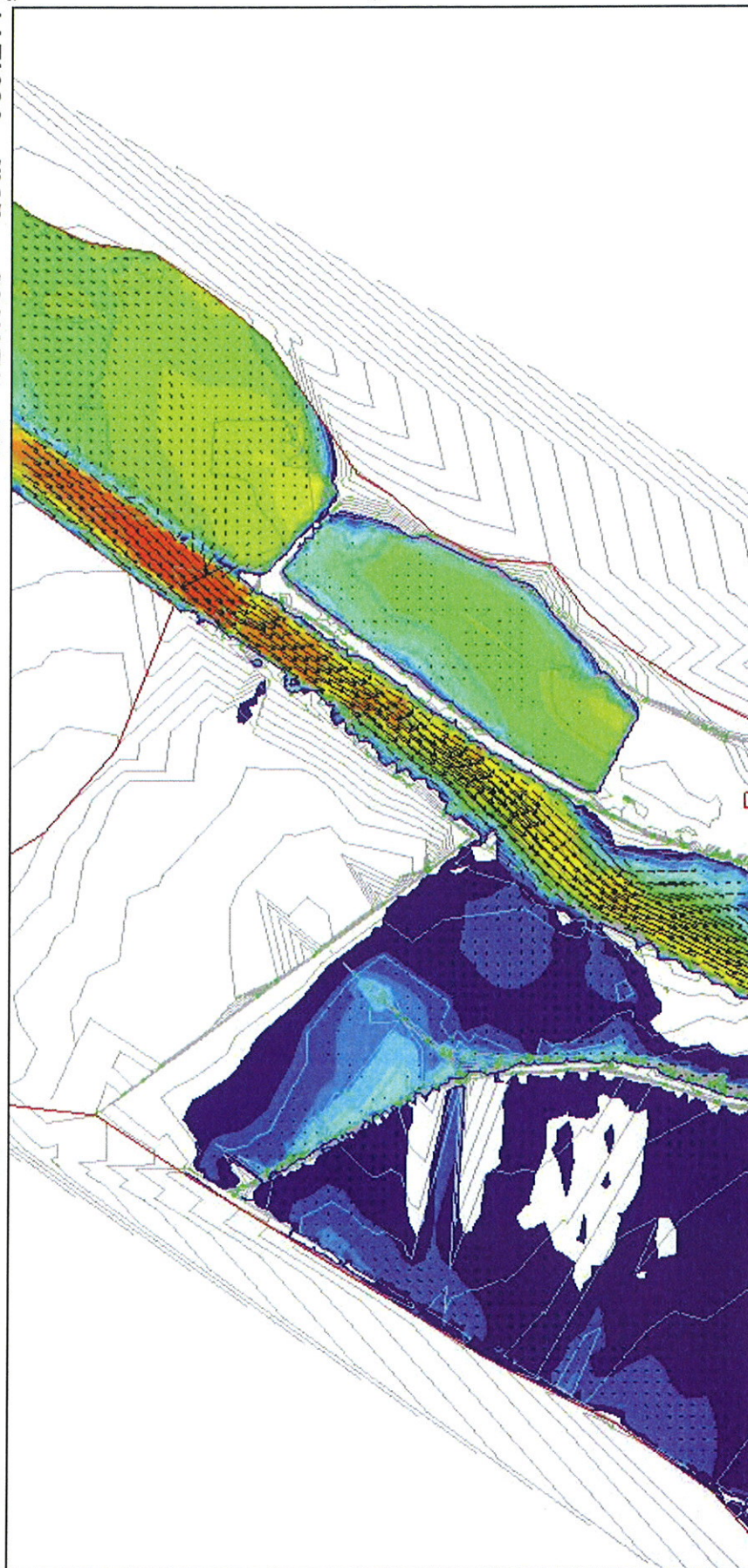
0.00

Velocity

10.0 m/s

Distance

100.0 m



9870.364

X

52870.172

11248.436

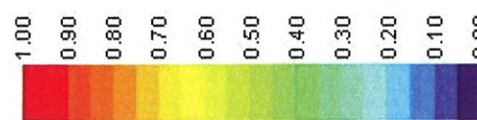
Y

Stato ATTUALE

Qin = 920.000 Qout = 909.211

54133.948

Velocity

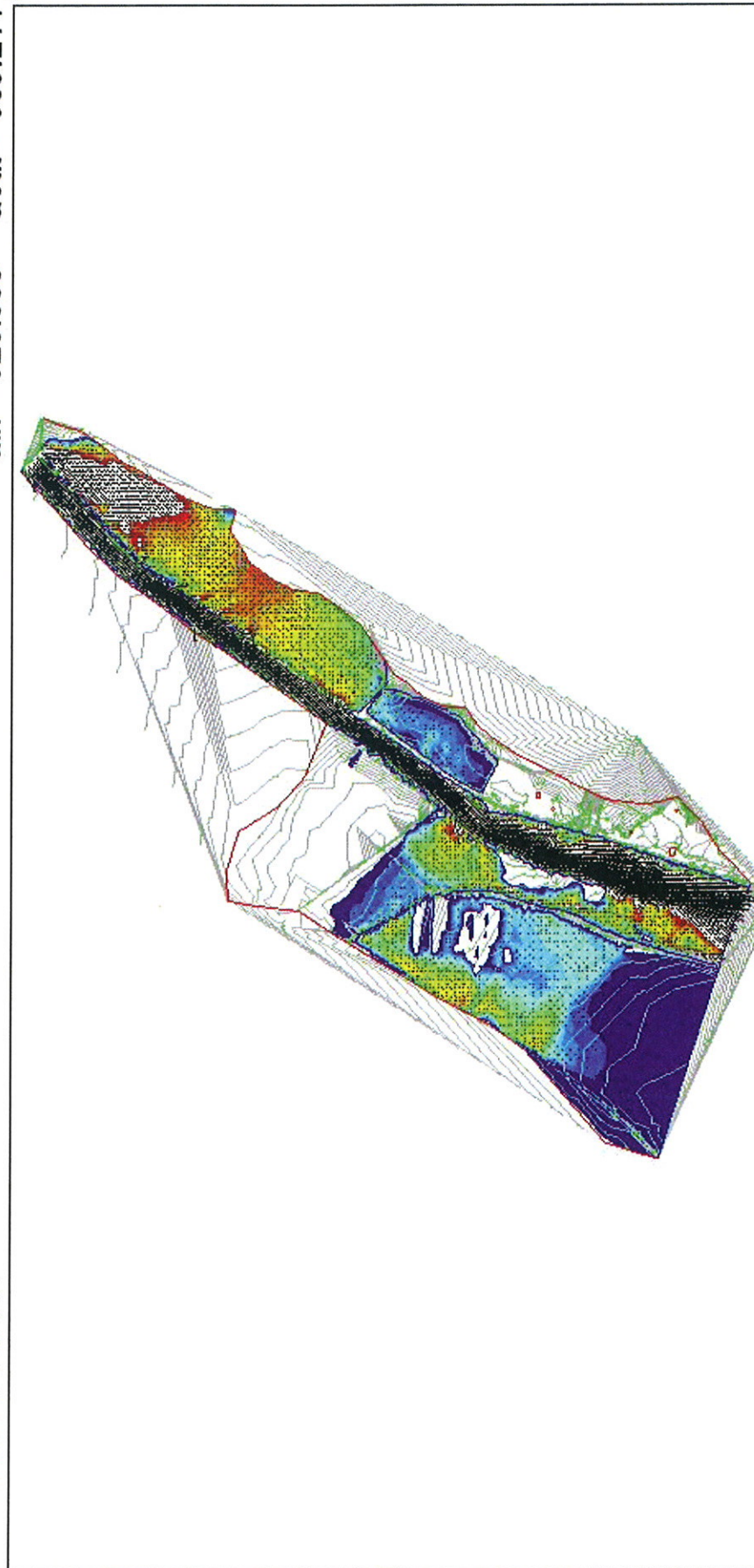


Velocity

10.0 m/s

Distance

100.0 m



8688.656

X

52348.524

12440.823



Stato ATTUALE

$Q_{in} = 920.000$   $Q_{out} = 909.211$

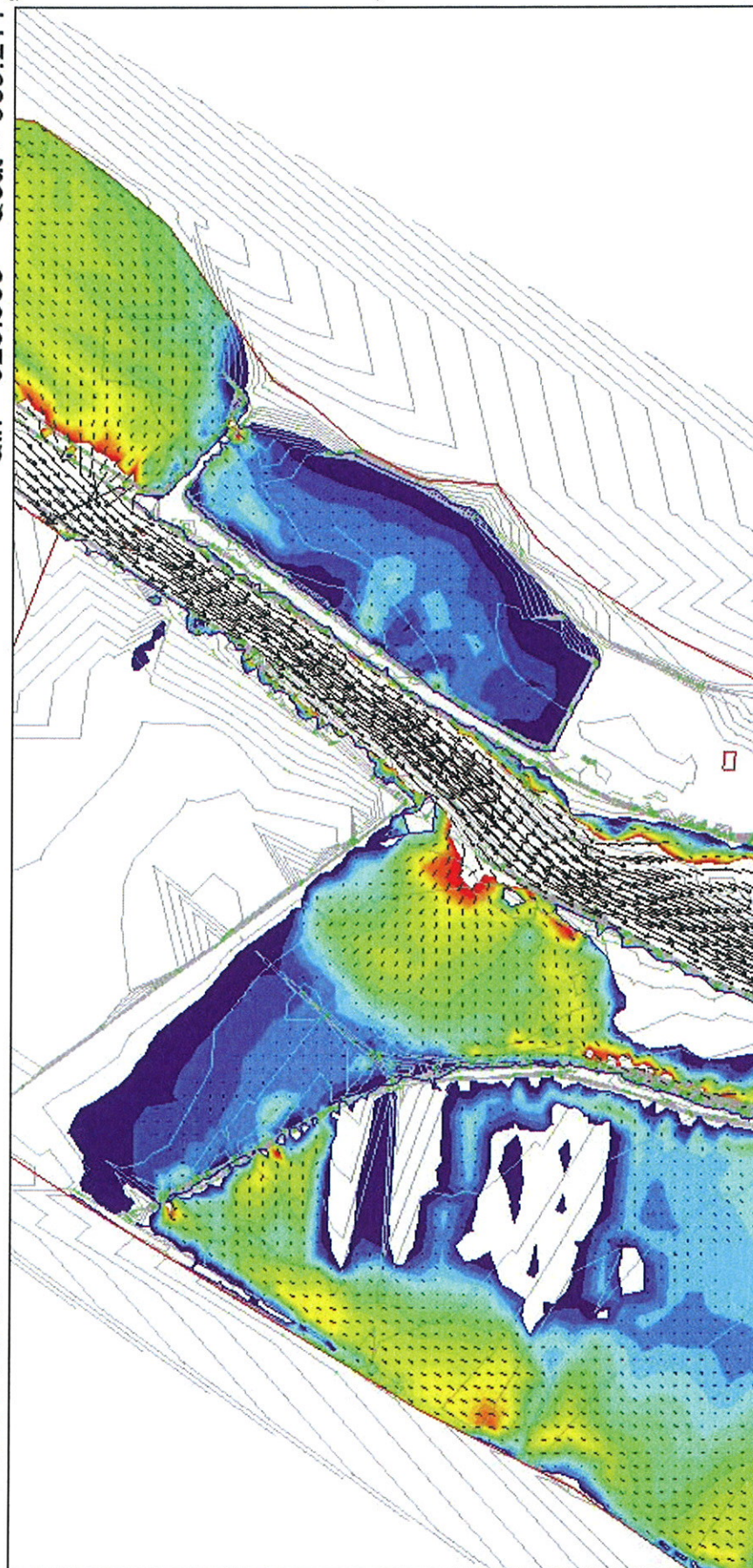
53416.028

Velocity



Velocity  
10.0 m/s

Distance  
100.0 m



9936.805

X

52853.559

11118.865

Stato di PROGETTO

$Q_{in} = 920.000$   $Q_{out} = 915.856$

54133.948

Depth

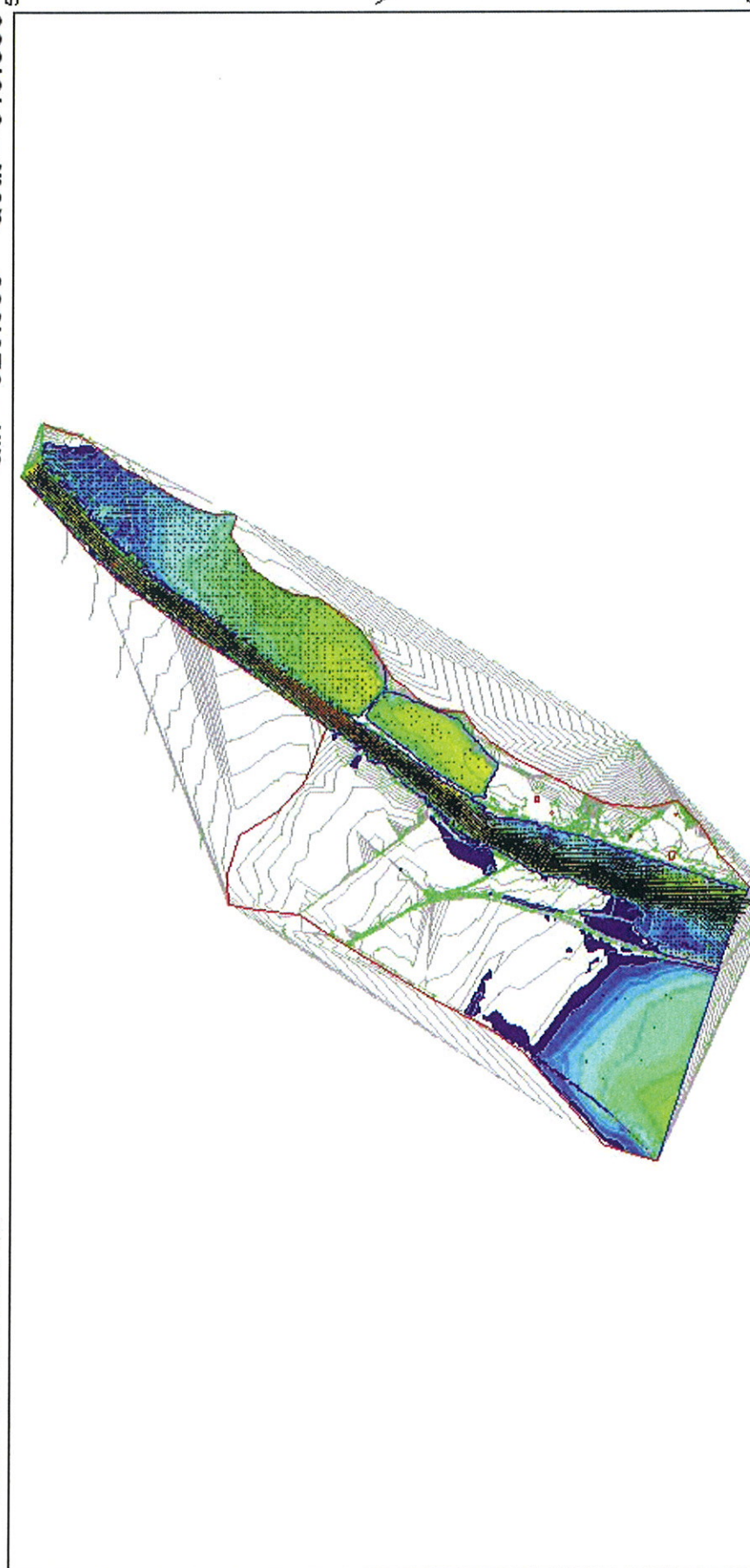


Velocity

10.0 m/s

Distance

100.0 m



Y

X

8688.656

52348.524

12440.823

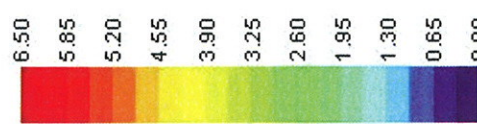


# Stato di PROGETTO - Particolare

Qin = 920.000 Qout = 915.856

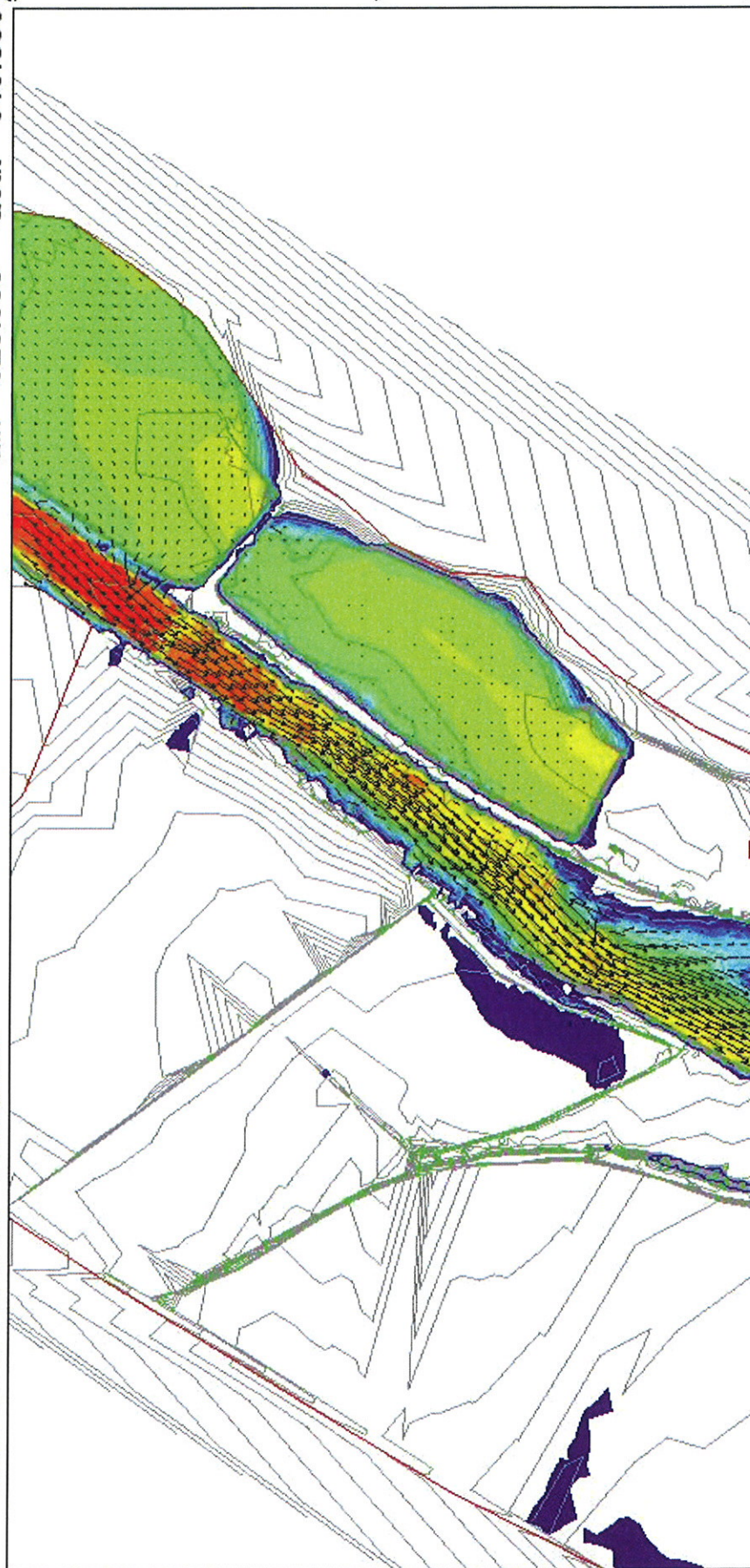
53442.609

Depth



Velocity  
10.0 m/s

Distance  
100.0 m



9997.936

X

52873.495

11193.961

Stato di PROGETTO

$Q_{in} = 920.000$   $Q_{out} = 915.856$

54133.948

Velocity

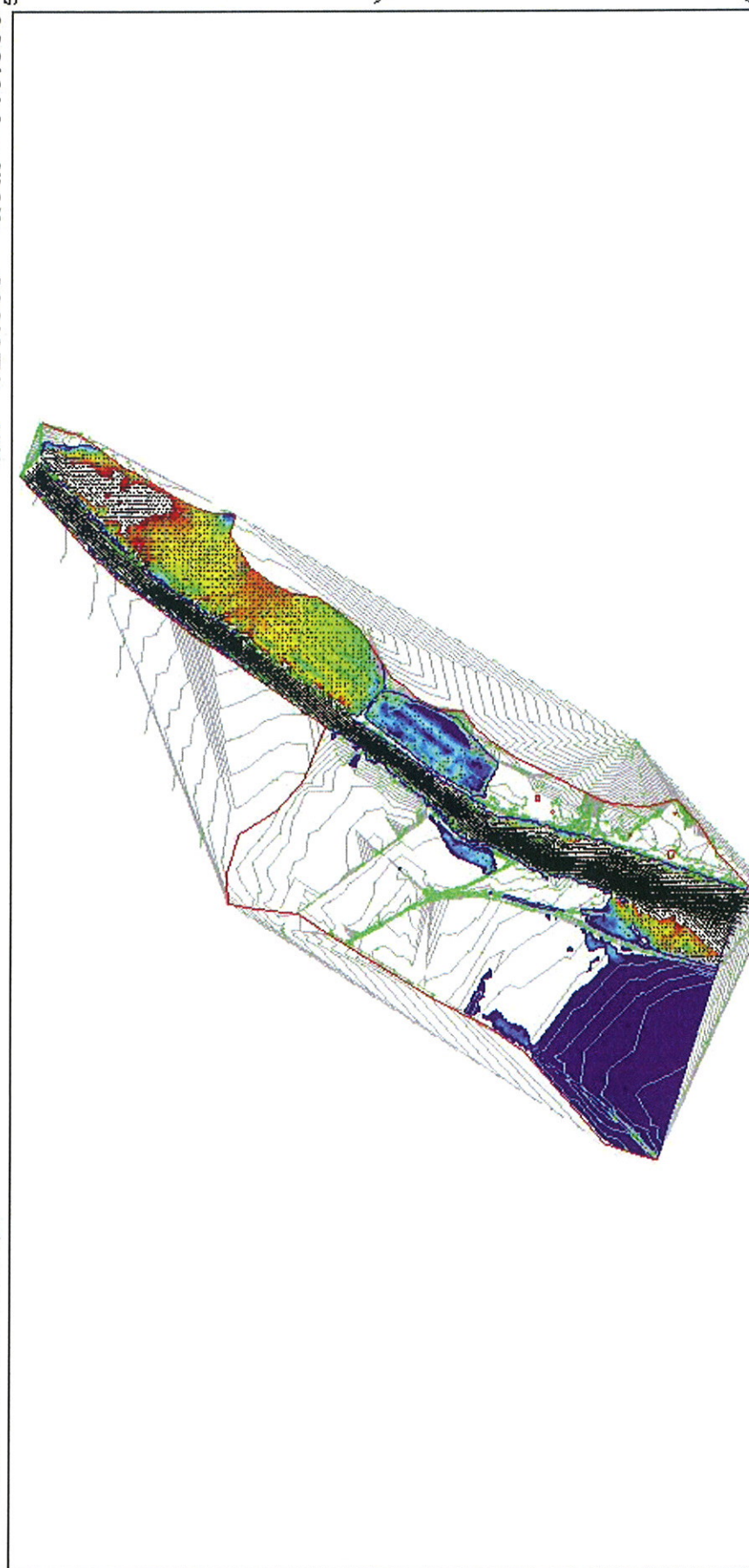


Velocity

10.0 m/s

Distance

100.0 m



8688.656

X

52348.524

12440.823



Stato di PROGETTO

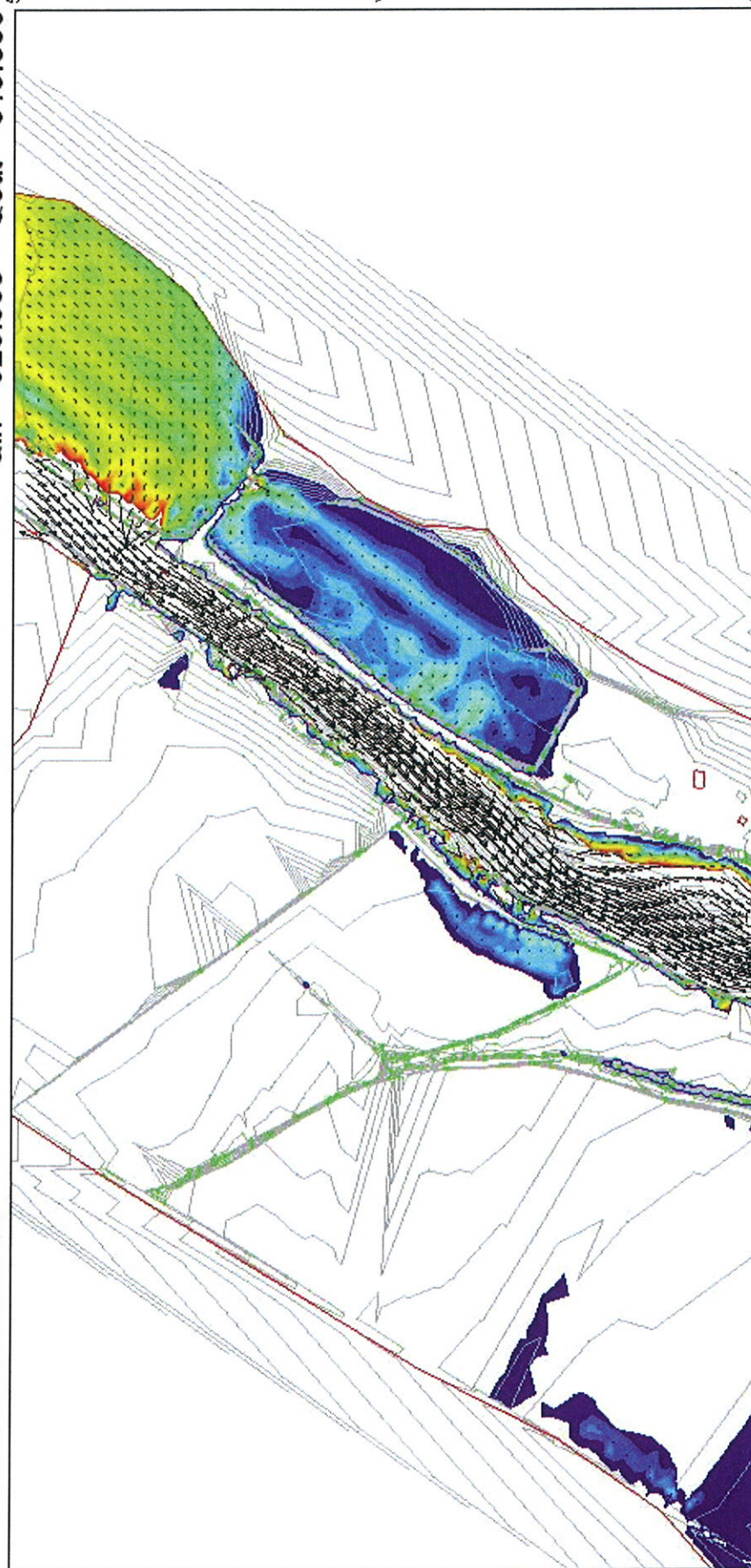
$Q_{in} = 920.000$   $Q_{out} = 915.856$

Velocity



Velocity  
10.0 m/s

Distance  
100.0 m



9890.494

X

11191.757

52826.741

Y

53445.932